

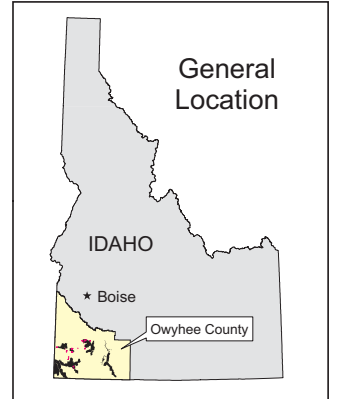
Owyhee Overview

March 25, 2008

This map prepared at the request of
Senator Mike Crapo.

Legend

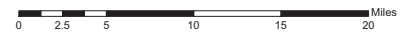
- Town
 - County Seat
 - Paved or Improved Road
 - Pipeline
 - Proposed Wild & Scenic River Designations (approximate)
 - Stream (perennial)
 - Lake, Reservoir, or Wide River (perennial)
 - Township
 - Section
 - Proposed for Acquisition
 - Proposed Ungrazed Wilderness
 - Proposed Reduced Grazed Wilderness
 - Proposed Wilderness (BLM land is yellow)
 - Non-WSA Wilderness (BLM land)
 - Released from Wilderness Study Area status
 - Birds of Prey National Conservation Area
 - Oregon Trail National Historic Trail
 - County Boundary
 - State Boundary
- | Land Status | |
|-------------|---|
| Orange | Bureau of Land Management |
| White | Private |
| Light Blue | State of Idaho |
| Dark Blue | State Fish and Game or Parks and Recreation |
| Light Green | Indian Reservation |
| Pink | Military |
| Yellow | Bureau of Reclamation |
| Dark Green | US Fish and Wildlife/National Wildlife Refuge |



GIS Data Sources:
Bureau of Land Management
Idaho Corporate Database
and the BLM Idaho State Office.
Current as of the database content
on the date map was created.

No warranty is made by the Bureau of Land Management (BLM).
The accuracy, reliability, or completeness of these data for
individual use or aggregate use with other data is not guaranteed.
Map date: March 25, 2008

Map projection: Universal Transverse Mercator zone 11, North American Datum 1983, meters.



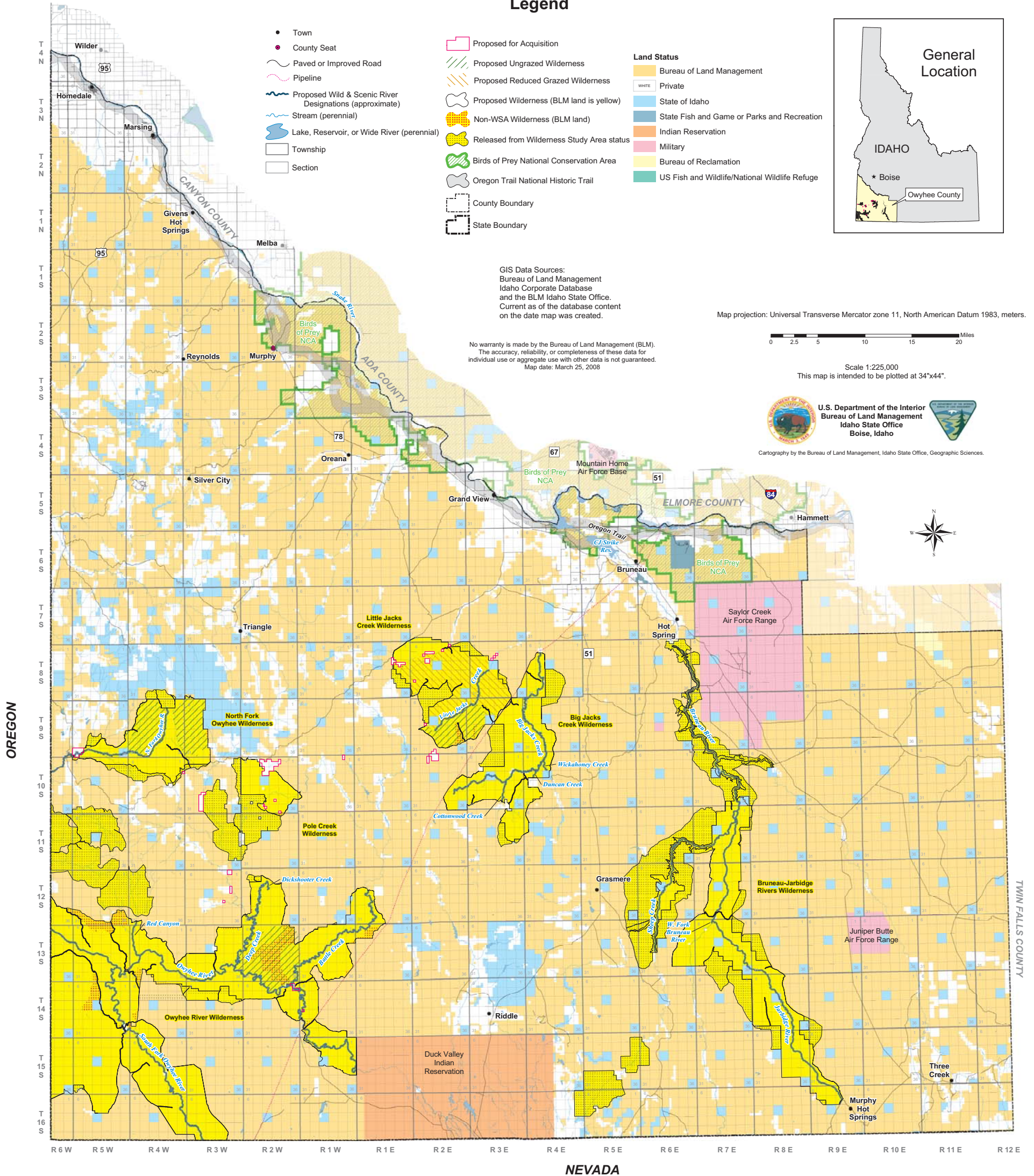
Scale 1:225,000
This map is intended to be plotted at 34"x44".



U.S. Department of the Interior
Bureau of Land Management
Idaho State Office
Boise, Idaho



Cartography by the Bureau of Land Management, Idaho State Office, Geographic Sciences.



OREGON

TWIN FALLS COUNTY

NEVADA